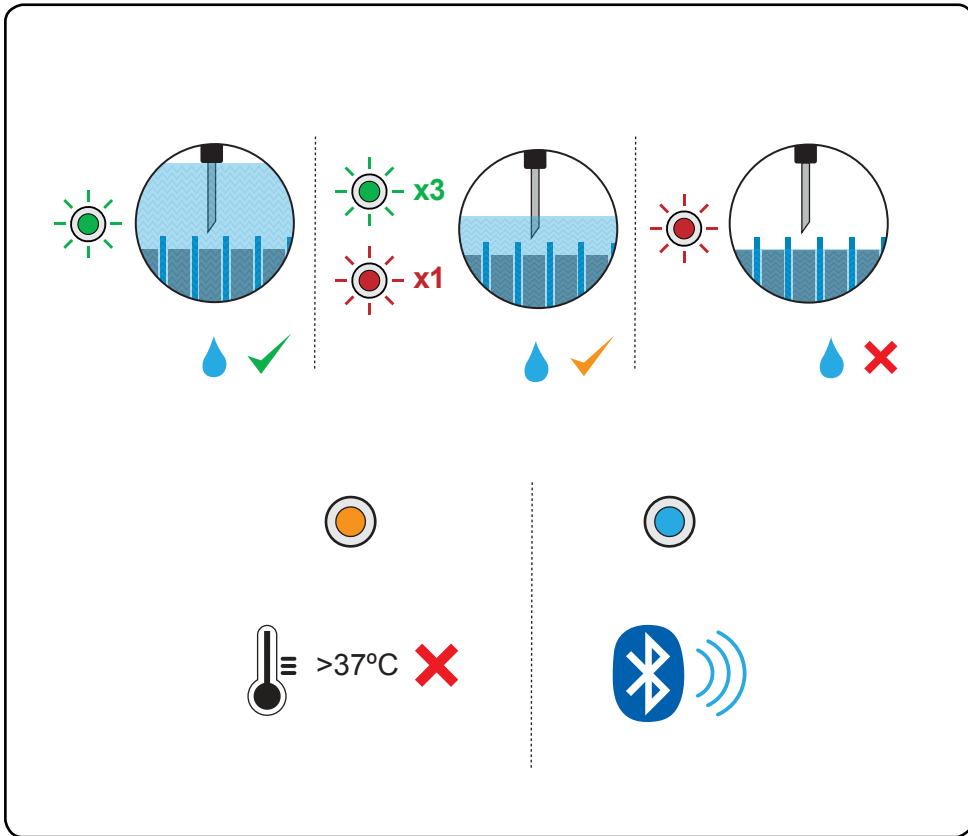


LED Indications



Americas: Info@phlsci.com
 EMEA: info@ps-europe.net
 Asia Pacific: info@phlsci.com.au
www.phlsci.com

Copyright © 2015 by Philadelphia Scientific LLC. All Rights Reserved. Philadelphia Scientific and the PS logo are registered trademarks of Philadelphia Scientific LLC. SmartBlinky is a trademark of Philadelphia Scientific LLC

DOC0142

eGO!3

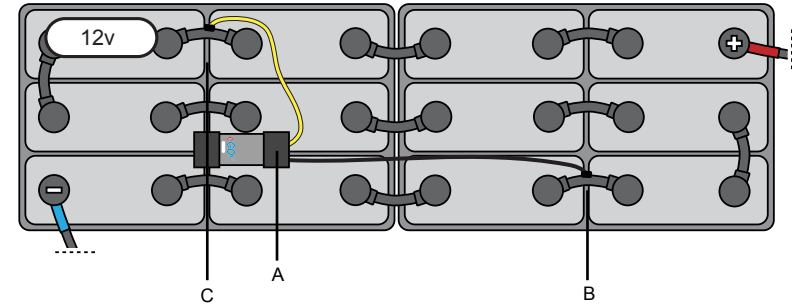
Screw (S)/FlexiTap (Q)



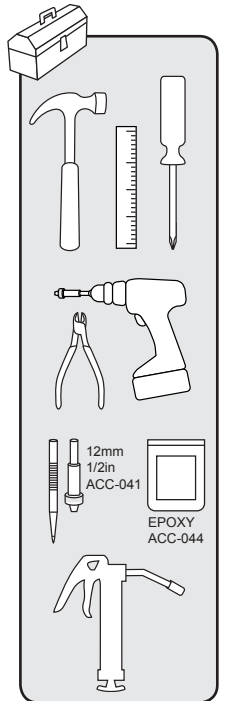
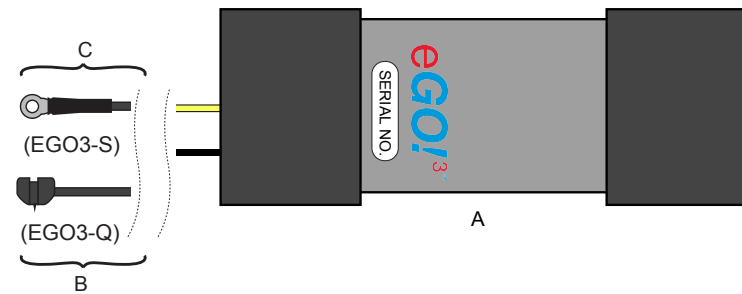
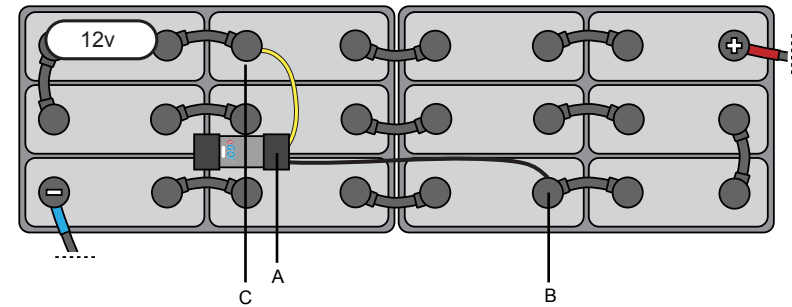
EGO3-12QG/SG

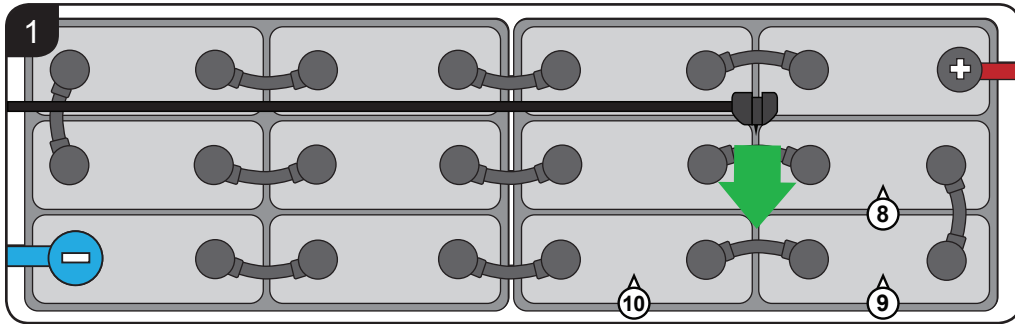


EGO3-12QG

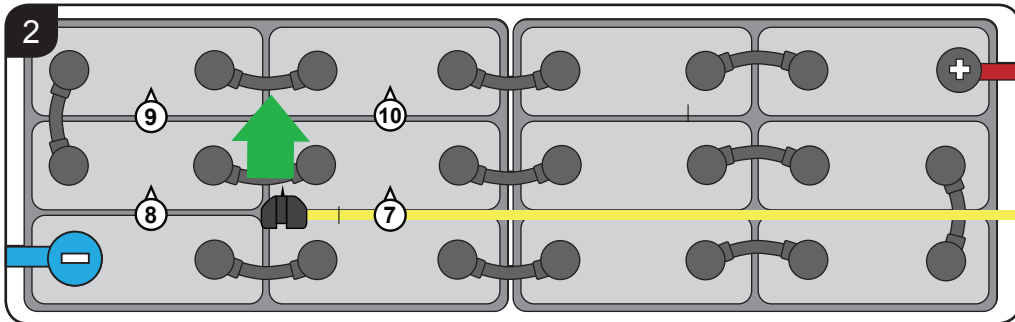


EGO3-12SG

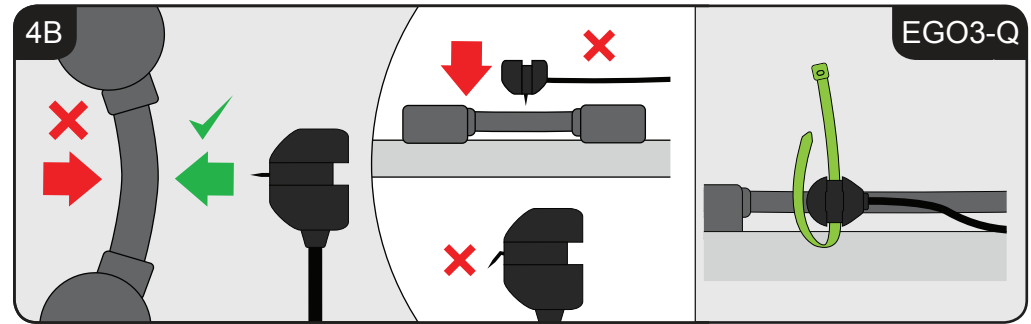
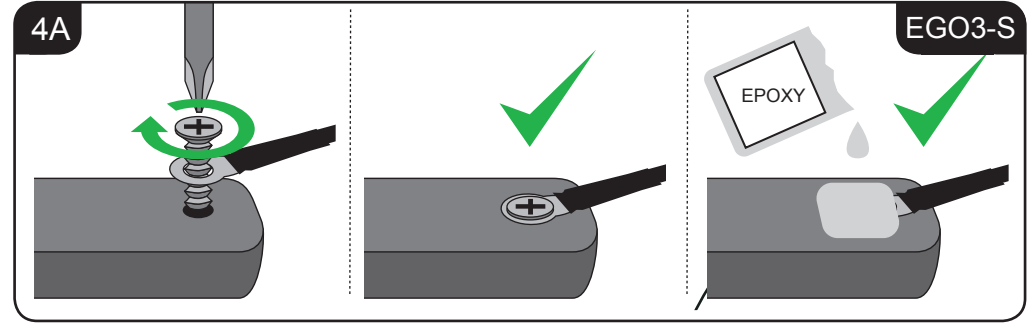
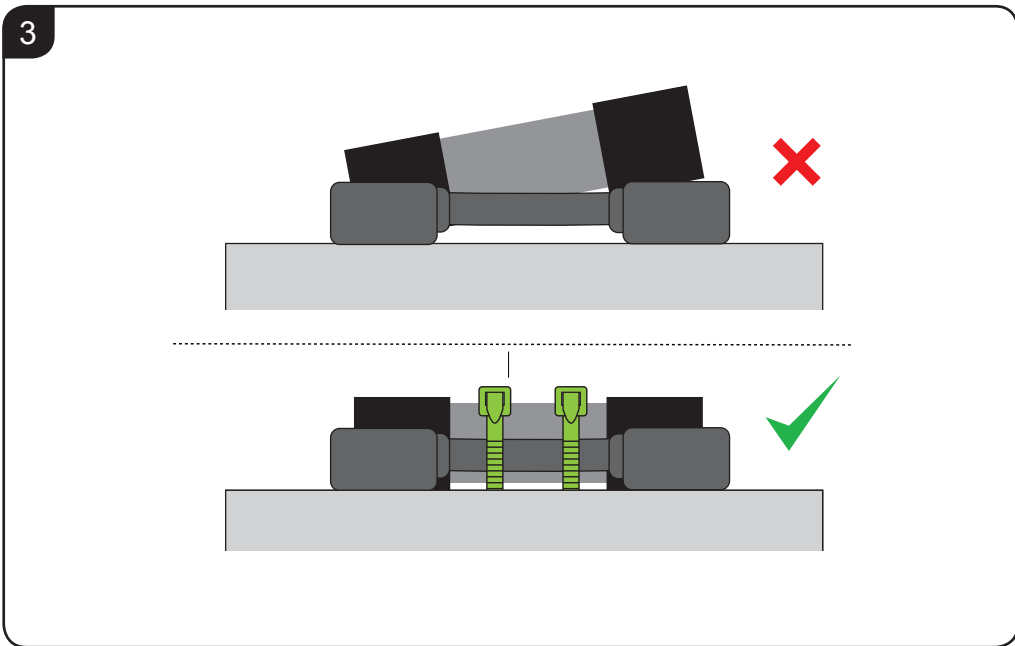




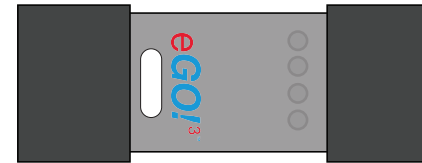
Black wire – attach to an intercell connector at least 8 cells from the positive take off.



Yellow wire – count 6 connectors towards to the positive take off and attach..



Initial Start Up



Once the power connections have been made and the electrolyte level indicator has been installed, the eGO13 is ready to start monitoring. You should expect to see the following light sequence on the front of the eGO13:



Lights in sequence.



Red (Plus white pulse if accessory fitted)

1 pulse for solenoid option.
2 pulses for pump option.
3 pulses for dash indicator.



Blue indicates that bluetooth is initiating.



Warning: check installation. This light indication means that the eGO13 detects a voltage outside operating voltage. Check the installation is across 12v (6 cells) and that the battery is not on charge



Blue should be flashing with an alternate green and red flash. This indicates that the eGO13 is listening for any upload information. This lasts for 2 minutes, after which normal light indication will resume – see below.